

Creek CD53

COMPACT DISC PLAYER



A HIGH PERFORMANCE
CD PLAYER WITH A
24/192 DAC
DESIGNED TO
CHALLENGE THE BEST
AND YET MEET
YOUR BUDGET

Following in the footsteps of the successful CD43mk2, which was given top awards in many magazines in the UK and around the world, the new CD53 has gone a step further by using a larger case, with 10mm solid aluminium front panel, to match the 5350 integrated amp, vacuum fluorescent display, new custom Creek control software, 2 high grade mains transformers for separate analogue and digital power supplies and the brand new 24/192 DAC.

Inside its sonically superior 2 mm thick alloy case, runs a Philips transport with CD7 chipset. This is coupled to a custom Creek microcontroller, which operates a green VFD display and RC5 infra-red remote control receiver. Speed and silence of operation, together with the ability to read CDR and CDRW discs are the essence of the new player. Advanced error correction algorithms work hard to read every bit of information, thus providing a better signal for the Digital to Analogue Converter to work with.

The rugged Philips laser transport and digital control circuitry has been matched to the highest quality Crystal Semiconductor CS4396 (24 bit 192 kHz) delta-sigma D to A converter. This results in a fast operating CD player with sound quality well ahead of much higher priced players, in the true Creek

mould.

With a new customised low jitter master clock circuit and extra circuitry to reduce jitter from the Digital Signal Processor, the CS4396 truly sings. In addition, a re-clocked, low jitter, coaxial digital output makes it possible to fully realise the potential of high-end 'stand alone' DAC's, provided the correct type of interconnect is used.

Another useful feature is a digital input facility that allows the user to access the internal DAC, via co-ax or optical connectors on the rear panel. This means that when not playing a disc, you can run the CD53 as a stand alone high grade 24/96 DAC for use with DAT, DAB or any other digital source.

Two high grade 'grain-oriented steel' mains transformers, feeding low impedance capacitors and separate stabilised power supplies for digital and analogue sections, provide the highest degree of isolation and lowest noise performance possible.

Front panel controls include Play, Stop, Pause, Open/Close, Skip Forward, Skip Back, Search Forward, Search Back, Random, Repeat and Standby functions. They are supplemented by a modest sized full feature RC5 type remote control handset.

The rear panel now has a mains

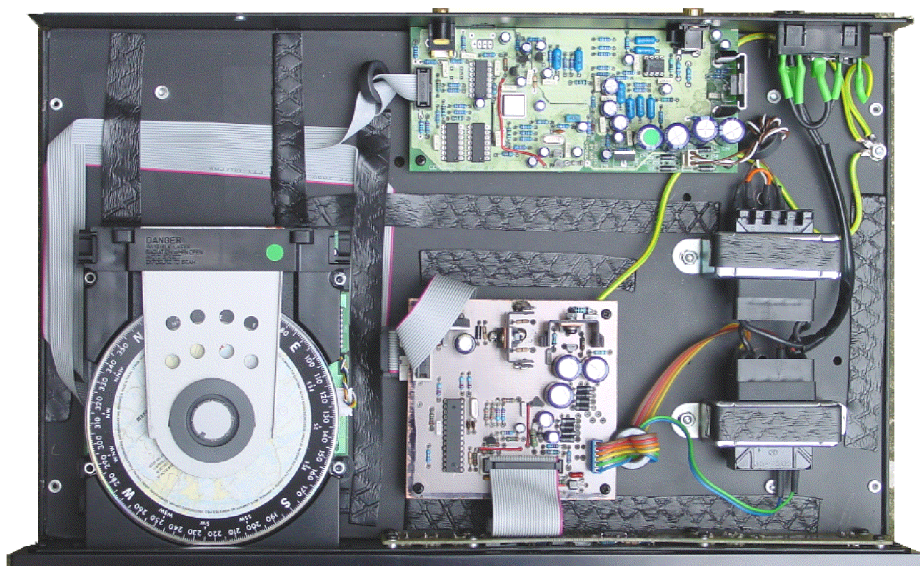
Creek
AUDIO LIMITED

switch, together with the usual fused IEC mains inlet. Gold plated Phono/RCA's for the (un-balanced) analogue output are complimented by a SPDIF Phono/RCA digital output.

A new feature for Creek equipment is the ability to place the CD53 into Standby mode, which blanks the display and LED backlight, reducing the power supply consumption to a minimum. Operating any local or remote key will wake it up.

To maintain low levels of interference, the user interface is via a low current green consumption vacuum flourescent display. This places very little demand on the power supply and helps to achieve high sound quality. A combination of the best parts, sourced from different suppliers has been used to construct this fine example of CD technology.

Creek Audio's M.D. Mike Creek says 'the CD53 is a statement product that is capable of achieving sonic and measured performance to match the best'.



 *Internal Layout*



 *Back Panel*

CREEK CD53 COMPACT DISC PLAYER TECHNICAL SPECIFICATIONS

Frequency Response	1Hz - 20 kHz
Distortion (%)	
-6dB	< 0.001
-30dB	< 0.008
Separation (dB)	> 90
Signal/Noise Ratio	> 105 dB
Dynamic Range	> 115 dB
Analogue Output	2.2 V RMS at 1 kHz
Output Impedance	600 Ω, min load 10 kΩ
Digital Output	Co-Ax and TORX
Digital Input	Co-Ax and TORX
Digital input capability	up to 24 bit 96 kHz
Laser Type	3 beam linear tracking
DAC Type	1 bit Delta Sigma CS4396
Power Requirements	AC 220-240 V 50 Hz or AC 110-120 V 60 Hz
Power Consumption Normal	18 W max
Power Consumption at Idle - Standby	9 W
Size	43 x 25 x 8 cm 17" x 10" x 3"
Weight	5.5 Kg

2 Bellevue Road, Friern Barnet, London N11 3ER, England
Tel: + 44 (0)20-8361 4133 E-mail: info@creekaudio.co.uk
Fax: + 44 (0)20-8361 4136 Internet: www.creekaudio.co.uk

Creek
AUDIO LIMITED