

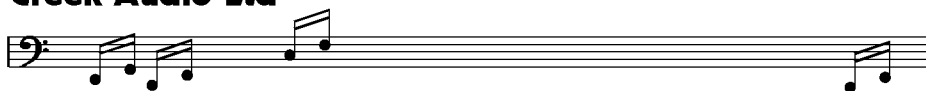
CREEK 5350 & 5350SE SPECIFICATION

<i>Measured at 230V or 115 V</i>	5350	5350SE
POWER OUTPUT (one channel)	85 Watts into 8 Ω	95 Watts
POWER OUTPUT (both channel)	75 Watts into 8 Ω	85 Watts
POWER OUTPUT (one channel into 4 Ω)	135 Watts	150 Watts
<i>Not recommended for use into more than two pairs of 8 Ω loudspeakers.</i>		
PEAK OUTPUT CURRENT into 1 Ω	> 20 Amps RMS	> 25 Amps RMS
TOTAL HARMONIC DISTORTION (20 Hz to 20 kHz) 50 Watts into 4 Ω	< 0.05%	< 0.05%
FREQUENCY RESPONSE	3 Hz to 25 kHz -1 dB	same
SLEW RATE	> 50 V per μ S	same
GAIN	50	50
INPUT SENSITIVITY Passive pre-amp	500 mV line input	525 mV
INPUT SENSITIVITY With line stage	+3 - 6dB's	(when fitted)
PRE-AMP OUTPUT LEVEL	same as input level when passive	
SIGNAL TO NOISE RATIO ('A' weighted)	> 106 dB	same
SEPARATION (line inputs)	> 55 dB at 1 kHz	same
MM PHONO SENSITIVITY AND IMPEDANCE	3.5 mV 47 k Ω	(when fitted)
MC PHONO SENSITIVITY AND IMPEDANCE	0.75 mV 1 k Ω	(when fitted)
POWER CONSUMPTION (at idle)	35 W	40 W
POWER CONSUMPTION (full power 10% THD)	330 W	350 W
WEIGHT	7 Kgs, 15.5 lbs net	8 Kgs packed
SIZE	430 x 76 x 280 mm, 17" x 3" x 11"	
MAINS VOLTAGE @ 60Hz	100V Japan, 115V North America	
@ 50Hz	230 UK, Europe and Asia	

MAINS VOLTAGE AND FREQUENCY IS INTERNALLY SET FOR THE COUNTRY OF USE

Creek Audio Ltd

Designed and made in the UK.



2 Bellevue Road, Friern Barnet, London N11 3ER, England

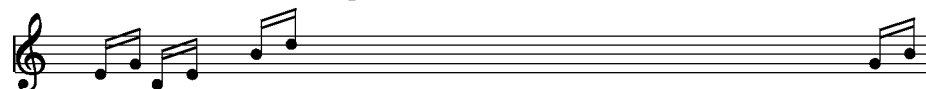
Tel: + 44 (0)20 8361 4133

Fax: + 44 (0)20 8361 4136

E-mail: info@creekaudio.co.uk

Internet: www.creekaudio.co.uk

Creek 5350 & 5350SE



Operating Instructions

Thank you for purchasing the 5350 amplifier. You are now in possession of a State of the Art Integrated Amplifier. The functions and operation of the 5350 and Special Edition are exactly the same and are very simple. However, the following notes are provided to explain all aspects of its design and use.

MAINS CONNECTION

When unpacking the amplifier please keep the packing material in a safe place for possible future use. In the pack there is a separate mains cable suitable for connecting to the mains supply in the country of use. The IEC socket end of the cable should be firmly inserted into the connector on the rear panel marked "Mains Input".

Remember, do not overload the mains wall socket with too many plugs or adapters. The high quality performance of the amplifier will be impaired if the electrical supply to it is in poor condition. If in doubt, consult a qualified electrician or your dealer.

The "Mains Input" connection is also fitted with a fuse, specifically suited to the supply voltage of the country of use. The correct value is clearly marked on the rear panel next to the Mains Input.

Should it be necessary to replace the fuse, ensure that you use the same type as specified on the rear panel, i.e.

5 x 20mm cartridge type: T 3.15 A surge resisting for 220-240V 50Hz AC, T 6.3 A surge resisting for 110-120V 60Hz AC or an T 8A surge resisting for 100V (Japan).



LOUDSPEAKER CONNECTIONS

The loudspeakers should be connected using a suitable pair of interconnects designed specifically for audio use. Two pairs of screw terminals marked 'A' allow for either bare wire or spade lug connectors to be passed through the hole or around the bush. Tighten the terminal fully after fitting the speaker wire. Please consult your dealer for advice if you are unsure. **Caution** Shorting the speaker wire or connectors will damage your amplifier.

It is **important** to connect the loudspeakers to the loudspeaker terminals in the correct phase. Cables are normally polarised with a line or a raised bump on the positive side. If one channel is not connected in the same fashion as the other, a severe loss of bass performance and a spreading of the stereo image will result.

A second set of terminals marked 'B' allow the user to select from the rotary control in the centre of the front panel, the option of having two pairs of speakers running separately, or together. The options include speakers off, when using headphones, speakers A, speakers B and speakers A and B together.

Caution It is not recommended to use loudspeakers of less than 4Ω resistance or more than two pairs of 8Ω speakers running from the amplifier at one time. However, bi-wiring of one pair of speakers, using the four terminal posts, can improve the sound of your system (consult your dealer for more details).

N.B. *It is VERY IMPORTANT not to short the loudspeaker cables together when the other ends are still connected to the amplifier, otherwise permanent damage can result. If it is necessary to move or change the location of your loudspeakers, make sure that you switch off the amplifier from the mains, or switch off the speakers from the selector first.*

INPUT CONNECTION AND SWITCHING

On the 5350 all six line input circuits, including the tape input, are passive. It is possible to make the pre-amp section active by removing the link PCB and replacing it with an active gain circuit. An increase in sensitivity of between 3 - 6dB's will result. Ask your dealer.

The tape input is in a loop with the tape output, enabling you to record anything you can hear, or in other words, **Monitor** recordings without interrupting the signal. The rotary selector switch on the left-hand side of the amplifier is used to select and listen to any of the desired inputs. The second rotary selector switch on the 5350, marked **Record**, allows you to record any input independent of the input you are listening to.

As all the line input levels are the same, it is not necessary to use the precise inputs as designated. You may, for example, plug a **CD** player into the **Tuner** input and obtain exactly the same result or performance as the dedicated CD input. However, for added flexibility, the first input on the 5350 can be used either for vinyl **Disc** or **Auxiliary Line**.

An optional low noise **MM or MC Phono Amplifier Module** is available, which replaces the standard passive Link pcb, internally. Check with your dealer for more details if required.

Two U shaped metal links are plugged between the sockets on the rear panel, marked pre-amp and power amp. They are intended to join the pre-amp to the power amp externally. If removed, the two circuits can be accessed separately. Do not loose these links, as the amplifier will not work normally without them.

VOLUME LEVEL

The volume control, situated in the right hand side of the front panel, is used to alter the relative level of the sound output from the amplifier. It is important to realise that the volume control only acts to reduce, or attenuate, the incoming signal to the power amplifier stage. The maximum power of the amplifier is available only if the level of signal available from the line level equipment is sufficient to drive it into clipping.

An active Creek Audio gain board may needed to increase the level as required (options include +3dB, or +6dB . Consult your dealer if you feel you need more advice.

OPERATING THE 5350

Make sure that the unit is on a suitable table, shelf or Hi-Fi equipment cabinet. It is important to allow adequate ventilation to the heatsink in the centre of the unit. Avoid obstruction of the ventilation slots on the top and bottom of the amplifier. It may be necessary to place the amplifier on the top of other equipment to allow for this.

Always have the volume control set at minimum (counter-clockwise) when switching on and off, to avoid any sudden loud noises. Select the desired input on the rotary selector and switch on the amplifier with the push button marked **Power** on the right hand side of the front panel. Adjust the volume gently and settle down to listen.

Your 5350 amplifier is designed to give years of reliable use if used correctly. If you need more assistance, it is always advisable to go back to the supplying dealer for his expert help. If you are unfortunate enough to need service work to be carried out on your amplifier, it should be returned to your dealer in the original packing material if possible.

REMOTE CONTROLLED VERSION (5350R & 5350SE)

The 5350R and 5350SE front panel controls function in exactly the same way as the standard 5350. The Creek Amplifier Remote Control handset allows the user to operate the volume control, input selection and mute by an infra-red (RC5) link. The bottom three buttons on the handset are for motorised volume up + down, plus mute functions. The buttons marked 1 Phono to 6 Tape are for selecting the desired source via a motorised version of the rotary input selector. Handset buttons 7, 8, 9 & 0 are not used on the 5350.

When the 5350R or the 5350SE are first switched on, the power LED will glow yellow until the protection circuit confirms everything is OK. The LED will then turn green and, if selected, the loudspeaker relays will click on. Volume changes will cause the Power LED to flash green. Pressing the mute button will cause the LED to turn yellow. Pressing the button again or increasing the volume will un-mute the amp and the LED will turn green again. Adjusting the volume downwards by remote will not un-mute the amp. Please note, muting can only be cleared by the remote handset or by switching the amplifier off for 30 seconds and back on again. If the amplifier stops working and the Power LED turns red, it indicates a fault. Return the amplifier to the supplying dealer for inspection.

N.B. *The 5350 is designed to work properly in normal domestic operating conditions. However, the amplifier's performance may be seriously affected if sited near to, or in the room with, a radio transmitter such as a mobile phone or CB radio rig, etc. Re-siting the 5350 or the radio will normalise the situation.*